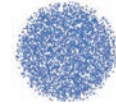


QT Plastic full cone nozzle with pipe clamp

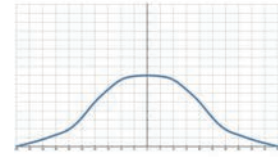


- Recommended working pressure: 2.0 kgf/cm²
- Flowrate tolerance: ± 10% @ 2.0 ± 0.1 kgf/cm²
- Angle tolerance: ± 10° @ 2.0 ± 0.1 kgf/cm²
- Size:
 - Drilling hole size: Ø 20 (19.0~20m/m)
 - Fits pipe size: 1-1/4, 1-1/2"

【 Top view of nozzle spray pattern 】



【 Flow distribution 】

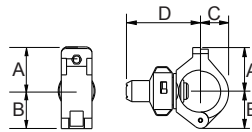


Features

- Full cone spray.
- The two-piece combination design is divided into a nozzle and a body. The nozzle part can be fixed to the body without fixing the nut. The body has a special pipe clamp design. It is only necessary to drill a hole in the water outlet pipe, and then lock it with iron screw. The nozzle is fixed on the pipe. This nozzle is commonly used in the pre-painting and continuous casting machine cooling process.
- Size:
 - Drilling hole size for pipe clamp: Ø 20 (19.0~20m/m)
 - Fits pipe size: 1-1/4"(OD42 +/-0.3mm), 1-1/2"(OD48 +/-0.4mm)

Applications

- Cleaning: Dust, cleaning device, etc.
- Dispersion: Humidifying, fire fighting, and dust suppression.



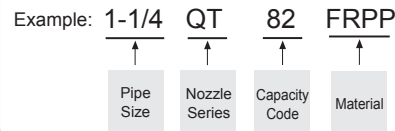
Material	Serie	Unit (mm)				Thread Type	Weight (g) PP
		A	B	C	D		
Plastic	1-1/4QT	42	50	31	85	1-1/4M	105.4
	1-1/2QT	42	50	31	85	1-1/2M	100.5

Appearance dimensions may vary depending on model, material. Please ask for details.

Material

- Nozzle: PP
- QT Body: FRPP
- Oring: NBR

How to place an order for LORRIC nozzles?



※ Standard Pressure: Column in red.
 ※ This product for spray angle 90° and 120° is able to be made to order.

Spray Angle	Capacity Code	Thread Size		Capacity at Pressure									Average particle size (um)	Min. Free Passage (mm)	Filter mesh
		1-1/4	1-1/2	0.5 kgf/cm ²	1 kgf/cm ²	1.5 kgf/cm ²	2 kgf/cm ²	2.5 kgf/cm ²	3 kgf/cm ²	3.5 kgf/cm ²	4 kgf/cm ²	5 kgf/cm ²			
60°	82	v	v	15.0	21.2	26.0	30.0	33.5	36.7	39.7	42.4	47.4	700	3.2	-

※ For MPa / bar / psi units, please refer to LORRIC.com.