

QSWP

Plastic hollow cone nozzle with pipe clamp

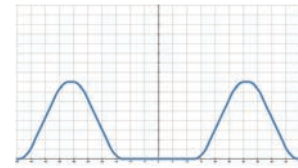


- Recommended working pressure: 2.0 kgf/cm²
- Flowrate tolerance: ± 10% @ 2.0 ± 0.1 kgf/cm²
- Angle tolerance: ± 10° @ 2.0 ± 0.1 kgf/cm²

【 Top view of nozzle spray pattern 】



【 Flow distribution 】



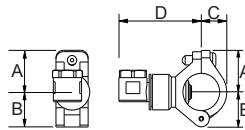
Features

- Spray patterns: Hollow Cone. The shape of the spray is circular.
- The nozzle flow path has no complicated structure which effectively avoids clogging.
- Multi-piece design, the nozzle part adopts a two-piece structure. The nozzle part can be disassembled to facilitate maintenance, cleaning and replacement; the nozzle part and the base buckle are positioned by the clamp, and the installation can be completed with bare hands without tools.
- The internal gaskets have different options such as TPR, Viton and Viton-F. They can be equipped with a variety of chemical product processes, and the special structural design allows the nozzles and the base to fit tightly to avoid water leakage.

- The spray direction is 90 degrees to the installation direction. Please make sure that the installation environment meets the requirements (The base is shared with the QSH and QSF nozzles. If the spray direction is limited, QSH can be used with the QSF nozzle head)
- Under the same test conditions, the hollow cone spray has the smallest particle size, so that it is commonly applicable in gas washing and dust suppression.
- Size:
 - Drilling hole size for pipe clamp: 9.8~10mm
 - Fits pipe size: 3/4"(OD26 +/-0.2mm), 1"(OD34 +/-0.3mm)

Applications

- Cleaning: Gas, cleaning, etc.
- Cooling: Gas, liquid, air conditioning, machinery, metal, plastic molding cooling process.
- Dispersion: Humidifying, aeration, firefighting, dedust, deodorization, etc.



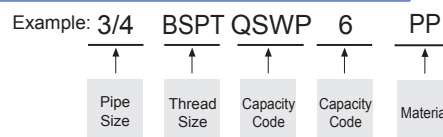
Appearance dimensions may vary depending on model, material. Please ask for details.

| Material | Serie | Unit (mm) | | | | Thread Type | Weight (g) |
|----------|---------|-----------|----|----|----|-------------|------------|
| | | A | B | C | D | | |
| Plastic | 3/4QSWP | 24 | 27 | 14 | 60 | 3/4M | 27 |
| | 1 QSWP | 28 | 33 | 22 | 62 | 1 | 30.5 |

Material

- Nozzle: PP
- Body: Strengthened Pipe Fiberglass PP

How to place an order for LORRIC nozzles?



※ Standard Pressure: Column in red.
 ※ This product for spray angle 90° and 120° is able to be made to order.

| Spray Angle | Capacity Code | Thread Size | | Capacity at Pressure | | | | | | | | | Average particle size (um) | Min. Free Passage (mm) | Filter mesh |
|-------------|---------------|-------------|---|-------------------------|-------------------------|-----------------------|-------------------------|-----------------------|-------------------------|-----------------------|-----------------------|-----------------------|----------------------------|------------------------|-------------|
| | | 3/4 | 1 | 0.5 kgf/cm ² | 0.7 kgf/cm ² | 1 kgf/cm ² | 1.5 kgf/cm ² | 2 kgf/cm ² | 2.5 kgf/cm ² | 3 kgf/cm ² | 4 kgf/cm ² | 6 kgf/cm ² | | | |
| 90° | 6 | v | v | 1.00 | 1.18 | 1.41 | 1.73 | 2.00 | 2.24 | 2.45 | 2.83 | 3.46 | 220 | 2.2 | - |

※ For MPa / bar / psi units, please refer to LORRIC.com.