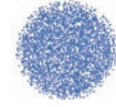


QSF

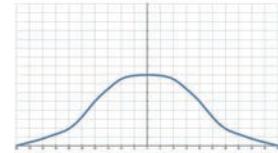
Plastic clog-resistant easy install full cone nozzle



【 Top view of nozzle spray pattern 】



【 Flow distribution 】



- Recommended working pressure: 2.0 kgf/cm²
- Flowrate tolerance: ± 10% @ 2.0 ± 0.1 kgf/cm²
- Angle tolerance: ± 10° @ 2.0 ± 0.1 kgf/cm²

Features

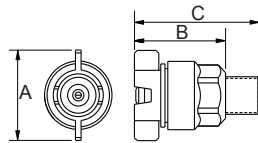
- Full cone spray.
- Unibody design allows for secure and easy installation, and X-shaped core provides minimal clogging. It is often used in etching and developing processes for semiconductors and printed circuit boards that require extremely high spray uniformity.
- Two piece nozzle design which includes nozzle and the body allows quick and accurate installation by hand. It is convenient for on-site management. Nozzle tip is secured into the body and fastened by three buckle points to avoid the nozzle tip loosening

and ensure the performance quality.

- The internal gaskets are available in various options such as EPDM, Viton and Viton-F, which can be adapted to various types of chemicals. With special structural design, the nozzles can be closely attached to the base to avoid water leakage.
- These general-purpose nozzles without guaranteed flow and angle tolerance are not recommended for environments with high accuracy requirements.

Applications

- Cleaning: Gas, exhaust gas, dust, cleaning device, tank cleaning, etc.
- Cooling: Gas, tank, machinery, metal, roof, etc.
- Dispersion: Humidifying, chemicals, dust suppression.



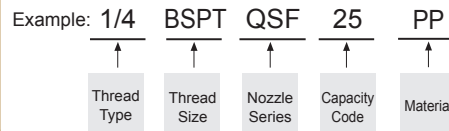
Appearance dimensions may vary depending on model, material. Please ask for details.

Material	Serie	Unit (mm)			Thread Type	Weight (g)
		A	B	C		
Plastic	1/4QSF	31	31	44	1/4M	10.4
	3/8QSF	31	31	44	3/8M	14.6

Material

- TIP: PP
- Core: PP
- Oring: EPDM, VITON, VITON F
- Body: PP, C-PVC

How to place an order for LORRIC nozzles?



※ Standard Pressure: Column in red.
 ※ This product for spray angle 90° and 120° is able to be made to order.

Spray Angle	Capacity Code	Capacity at Pressure									Average particle size (um)	Min. Free Passage (mm)	Filter mesh
		0.7 kgf/cm ²	1 kgf/cm ²	1.5 kgf/cm ²	2 kgf/cm ²	4 kgf/cm ²	6 kgf/cm ²	8 kgf/cm ²	10 kgf/cm ²	15 kgf/cm ²			
50°	25	1.48	1.77	2.17	2.50	3.54	4.33	5.00	5.59	6.85	400	1.4	-
	30	1.77	2.12	2.60	3.00	4.24	5.20	6.00	6.71	8.22		1.5	-
	35	2.07	2.47	3.03	3.50	4.95	6.06	7.00	7.83	9.59		1.6	-
	40	2.37	2.83	3.46	4.00	5.66	6.93	8.00	8.94	10.95		1.7	-
	45	2.66	3.18	3.90	4.50	6.36	7.79	9.00	10.06	12.32		1.7	-
90°	50	2.96	3.54	4.33	5.00	7.07	8.66	10.00	11.18	13.69	400	1.7	-
	55	3.25	3.89	4.76	5.50	7.78	9.53	11.00	12.30	15.06		1.7	-

※ For MPa / bar / psi units, please refer to LORRIC.com.