

## MWT Metal hollow cone nozzle

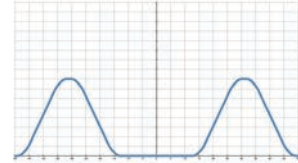


- Recommended working pressure: 2.0 kgf/cm<sup>2</sup>
- Flowrate tolerance: ± 5% @ 2.0 ± 0.1 kgf/cm<sup>2</sup>
- Angle tolerance: ± 5° @ 2.0 ± 0.1 kgf/cm<sup>2</sup>

【 Top view of nozzle spray pattern 】



【 Flow distribution 】



### Features

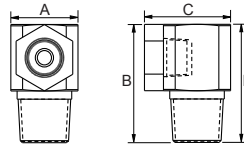
- Spray patterns: Hollow Cone. The shape of the spray is circular (circular Impact).
- The nozzle flow path has no complicated structure and effectively prevents foreign matter from being blocked.
- Two piece nozzle design enables easy clean and installation.
- The direction of the spray is 90 degrees to the mounting direction. Please confirm that the installation environment

meets the requirements.

- Under the same test conditions, the hollow cone spray has the smallest particle size, so it is commonly used in gas scrubbing and dust suppression applications.

### Applications

- Cleaning: Gas cleaning etc.
- Cooling: Gas, liquid, air conditioning, machinery, metal, plastic molding cooling process.
- Dispersion: Humidifying, aeration, firefighting, dedusting, deodorization, etc.



Appearance dimensions may vary depending on model, material. Please ask for details.

| Material | Serie  | Unit (mm) |    |    |    | Thread Type | Weight (g) |      |
|----------|--------|-----------|----|----|----|-------------|------------|------|
|          |        | A         | B  | C  | D  |             | S303       | S316 |
| Plastic  | 1/8MWT | 13        | 22 | 15 | 16 | 1/8M        | -          | -    |
|          | 1/4MWT | 16        | 29 | 18 | 21 | 1/4M        | 39         | 39.5 |
|          | 3/8MWT | 19        | 35 | 20 | 24 | 3/8M        | -          | -    |

### Material

- Metal: Stainless 303, Stainless 316

#### How to place an order for LORRIC nozzles?

Example: **1/4** **BSPT** **MWT** **5** **60** **S316**

↑            ↑            ↑            ↑            ↑            ↑

Thread    Thread    Capacity    Capacity    Spray        Material

Type      Size      Code      Code      Angle       

※ Standard Pressure: Column in red.

| Spray Angle | Capacity Code | Capacity at Pressure    |                       |                         |                       |                       |                       |                       |                        |                        | Average particle size (um) | Min. Free Passage (mm) | Filter mesh |
|-------------|---------------|-------------------------|-----------------------|-------------------------|-----------------------|-----------------------|-----------------------|-----------------------|------------------------|------------------------|----------------------------|------------------------|-------------|
|             |               | 0.7 kgf/cm <sup>2</sup> | 1 kgf/cm <sup>2</sup> | 1.5 kgf/cm <sup>2</sup> | 2 kgf/cm <sup>2</sup> | 4 kgf/cm <sup>2</sup> | 6 kgf/cm <sup>2</sup> | 8 kgf/cm <sup>2</sup> | 10 kgf/cm <sup>2</sup> | 15 kgf/cm <sup>2</sup> |                            |                        |             |
| 60°         | 3             | 1.77                    | 2.12                  | 2.60                    | 3.00                  | 4.24                  | 5.20                  | 6.00                  | 6.71                   | 8.22                   | 230                        | 3                      | -           |
|             | 5             | 2.96                    | 3.54                  | 4.33                    | 5.00                  | 7.07                  | 8.66                  | 10.00                 | 11.18                  | 13.69                  |                            | 4                      | -           |

※ For MPa / bar / psi units, please refer to LORRIC.com.