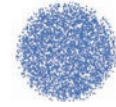


KG Metal full cone nozzle



- Recommended working pressure: 2.0 kgf/cm²
- Flowrate tolerance: ± 5% @ 2.0 ± 0.1 kgf/cm²
- Angle tolerance: ± 5° @ 2.0 ± 0.1 kgf/cm²

【 Top view of nozzle spray pattern 】



【 Flow distribution 】



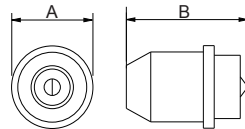
Features

- Full cone spray.
- Unibody design allows for secure and easy installation, and X-shaped core provides minimal clogging.
- Three-piece structure facilitates maintenance cleaning and replacement, and can save the cost of replacing the nozzle head. Expenditure filter design, easy maintenance, reduced blocking, and reduced cleaning due to maintenance. When the

hole is clogged, it may damage the nozzle hole.

Applications

- Cleaning: Gas, exhaust gas, dust, cleaners, etc.
- Cooling: Gas, tank, machinery, metal, etc.
- Dispersion: Humidifying, fire fighting, and dust suppression.



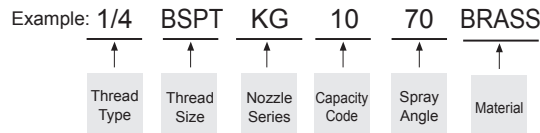
Material	Serie	Unit (mm)		Thread Type	Weight (g)		
		A	B		S303	S316	Brass
Metal	1/8KG	21	45	1/8M			
	1/4KG	21	47	1/4M	10.4	10.6	11.5
	3/8KG	21	47	3/8M			

Appearance dimensions may vary depending on model, material. Please ask for details.

Material

- Metal: Stainless 303, Stainless 316, BRASS

How to place an order for LORRIC nozzles?



※ Standard Pressure: Column in red.
 ※ This product for spray angle 90° and 120° is able to be made to order.

Spray Angle	Capacity Code	Capacity at Pressure									Average particle size (um)	Min. Free Passage (mm)	Filter mesh
		0.5 kgf/cm ²	0.7 kgf/cm ²	1 kgf/cm ²	1.5 kgf/cm ²	2 kgf/cm ²	2.5 kgf/cm ²	3 kgf/cm ²	5 kgf/cm ²	10 kgf/cm ²			
70°	10	3.10	3.67	4.38	5.37	6.20	6.93	7.59	9.80	13.86	-	1.7	-

※ For MPa / bar / psi units, please refer to LORRIC.com.